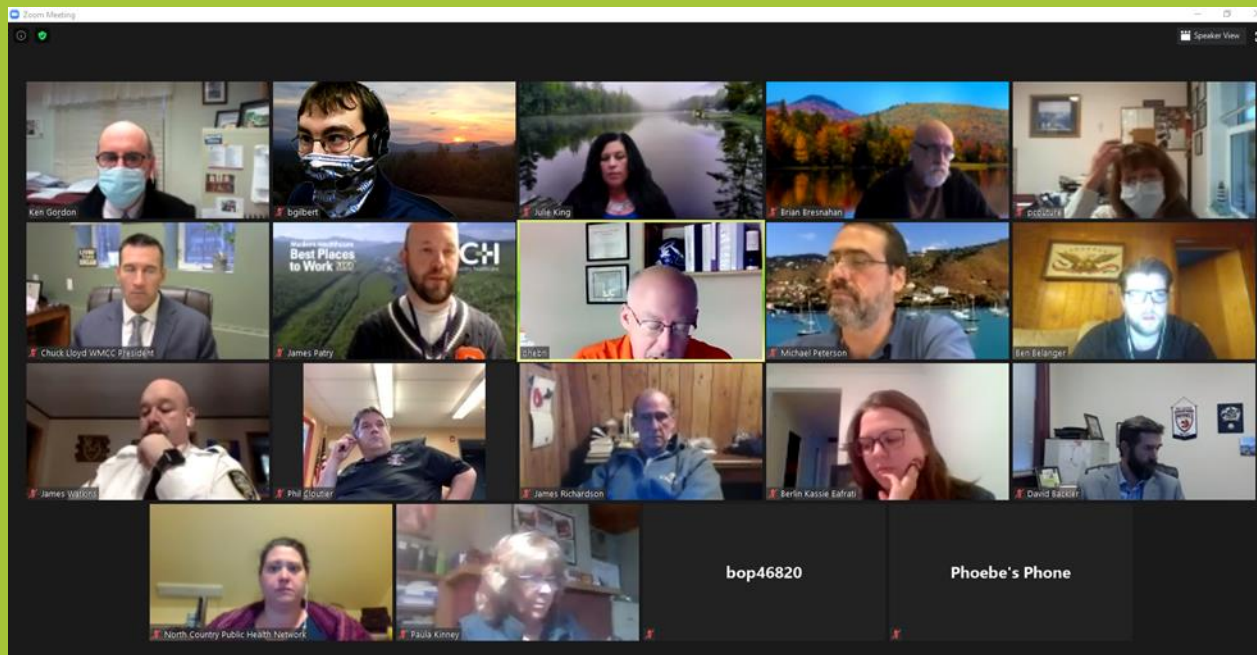


# Androscoggin Valley Covid-19 Workgroup

11-18-2022



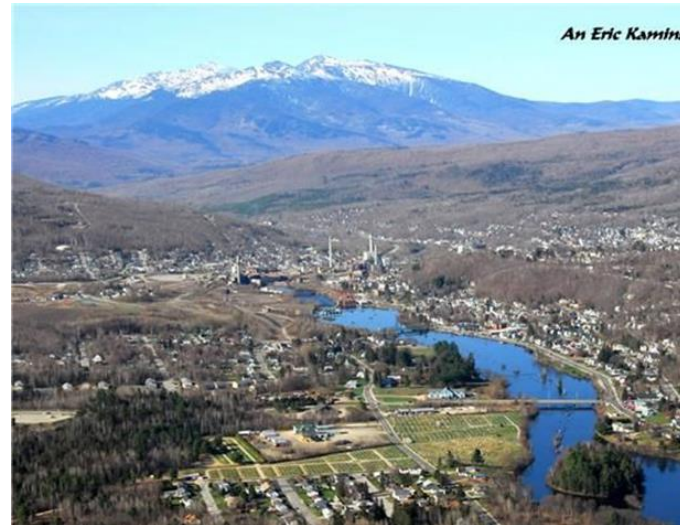
Michael Peterson, FACHE  
President & CEO





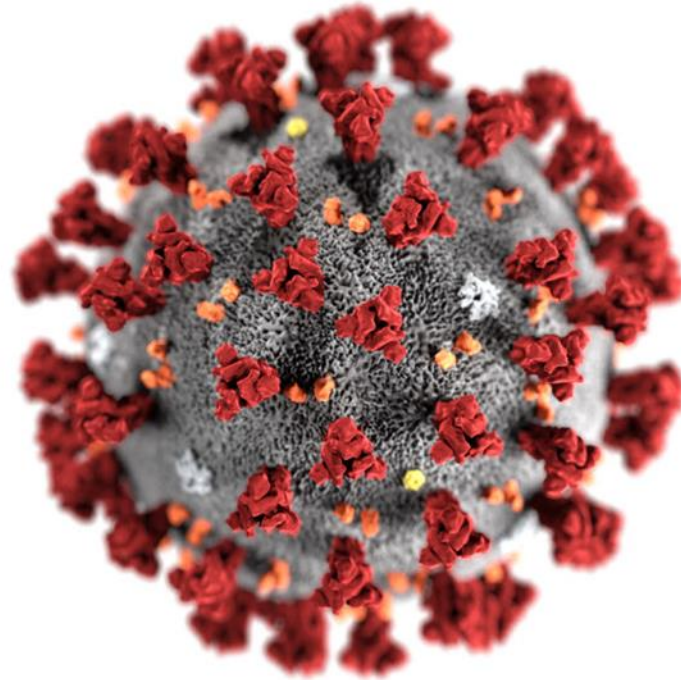
# Community Characteristics

- ❑ Mix of Small City, Village, Rural
- ❑ Socio-Economic Distress
- ❑ Pop. = @15,000
- ❑ “Tight” Social Structure
- ❑ “Anchor” Public Schools
- ❑ 2 Prisons
- ❑ Community College
- ❑ CAH / FQHC
- ❑ 2 Nursing Homes



# And then . . . Along Comes COVID-19

- China – Late 2019
- Washington State
- Middle East
- Europe
- New Hampshire!!



# Unique Community Vulnerability = Emerging Anxiety

- Aging Population
- 2 SNFs / 2 Prisons
- Tightly Knit Community
- Tourism Dependent Economy
- Modest Health System Capacity



# Formulating a Response

## Concerns

- Patient / Staff Safety
- Organizational
- Health / Education / Social Service Systems
- Public Health



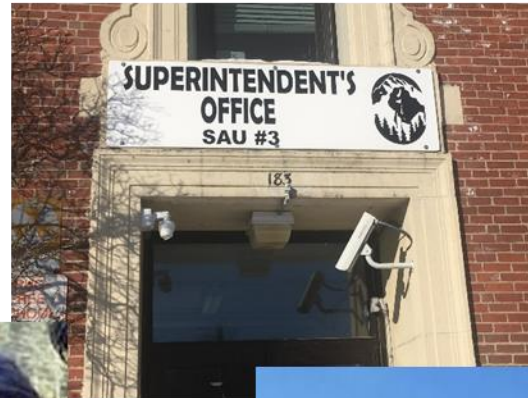


# What is Happening?

- Federal Information – Varied
  - CDC / White House / FDA
- State Sources
  - DHHS / Gov's Office
- Local - Limited
  - Incident Command Structur
  - Informal Communications
  - Disinformation

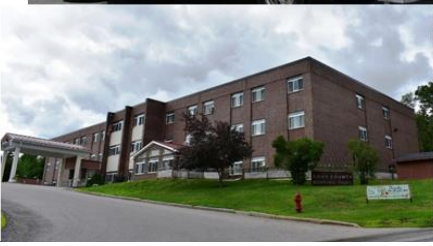
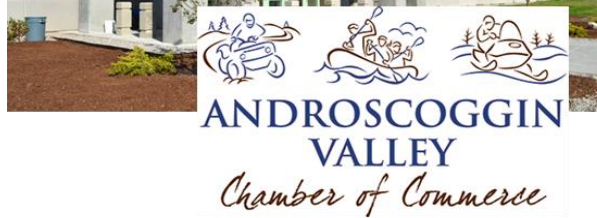
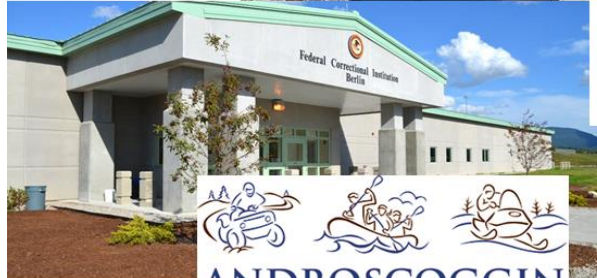


# A Meeting With School Leaders



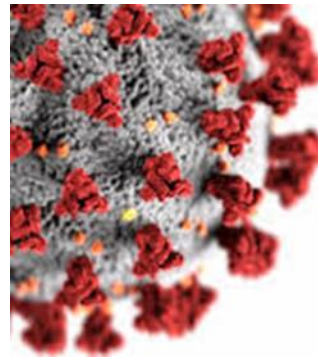


# We Ought to Get A Larger Group Together . . .



# The Basics . . .

- Meeting 2-3x Week / 1 hour via Zoom initially
  - At peak (April-June 2020, and again during Delta) 7 days/week
- Consistent Facilitation & Format
  - Meeting Dedication
  - Situation Updates
  - Current Issues
  - Matching Needs with Resources
  - Anticipatory Planning
- Email Updates
- Other Factors to Success
  - Honesty
  - Acceptance
  - Vulnerability
  - Sharing both “losses” and “wins”



**COVID-19**  
**WORKGROUP**

# Resulting Benefits . . .

- Resource Sharing
  - Efficient Allocation of Limited Resources
  - Shared Best-Practice Approaches
- Situational Awareness
  - Better Informed Decisions
- Decision-Making
  - Learning from the Experience of Others
  - Debunking Myths/Rumors
- Emotional Support
  - Leaders need a safe place to share too

# Resulting Benefits . . .

- Consistent Messaging
- Community-wide Involvement
  - Increased resources
  - Reduced “time to act”
- Advocacy with a “Single Voice”
- Education/Resource Distribution

# Resulting Benefits . . .

- Understanding of Inter-Relationships
  - What Happens One Place Affects Others
- Forging Community Ties
  - Establishing Relationships
  - New Appreciation for the Work of other Community Organizations.
  - Attracting Attention to Needs
- Framework for Tackling Other Issues
  - Monkey Pox, Hunger, Diabetes, Elder Abuse, etc.