

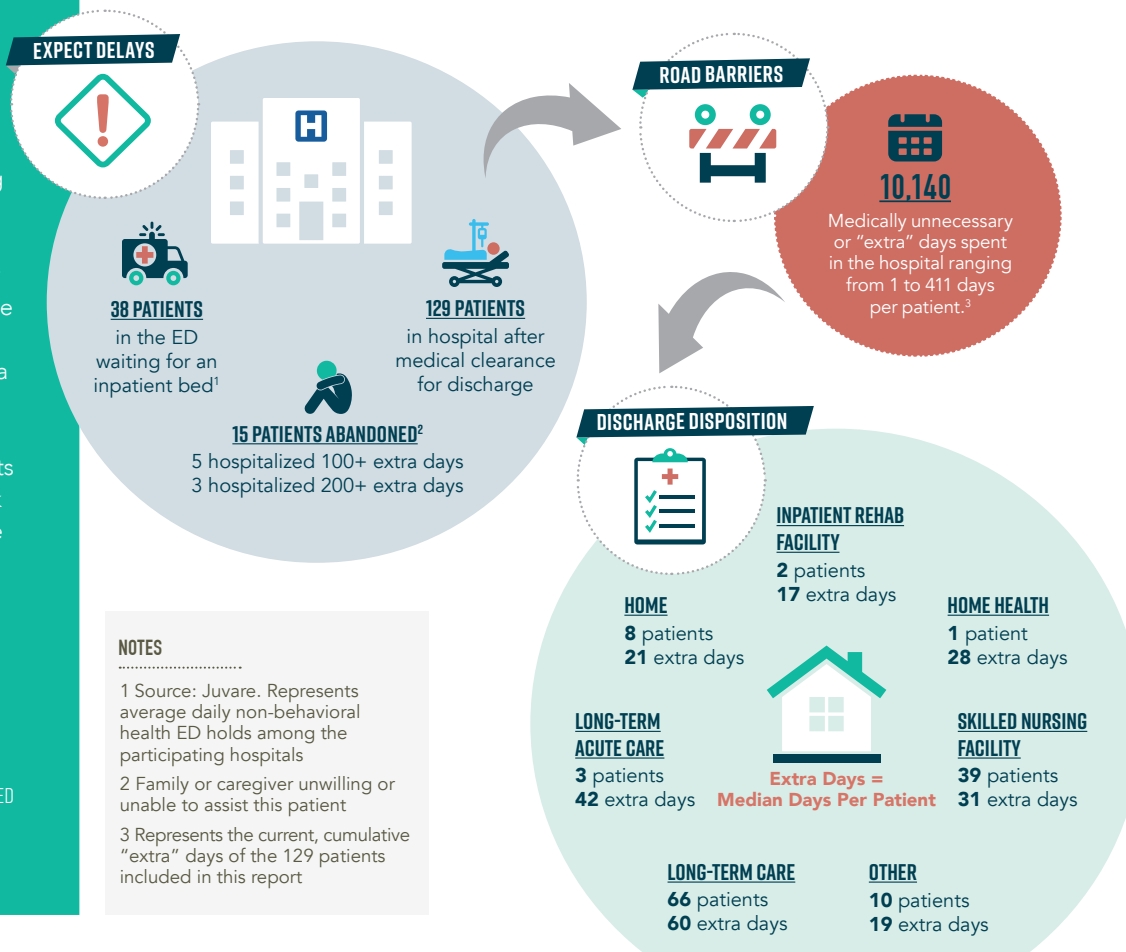
# MEDICALLY CLEARED PATIENTS IN NEW HAMPSHIRE HOSPITALS FACE BARRIERS TO DISCHARGE

Across New Hampshire, patients who no longer have medical needs are 'stuck' in hospital beds awaiting safe discharge dispositions. There are a number of barriers that lead to these delays, impacting not only these patients, but those who require inpatient beds and must wait in Emergency Departments (ED) until a bed becomes available.

This report is a snapshot of all patients on a single day during the first week of March 2024 medically ready to be discharged but unable to safely leave the hospital.

## 20 HOSPITALS REPORTING

DATA WAS SOURCED FROM FOUNDATION FOR HEALTHY COMMUNITIES' MONTHLY BARRIERS TO DISCHARGE SURVEY. NON-PARTICIPATING HOSPITALS WERE EXCLUDED FROM CALCULATIONS.



### NOTES

- 1 Source: Juvare. Represents average daily non-behavioral health ED holds among the participating hospitals
- 2 Family or caregiver unwilling or unable to assist this patient
- 3 Represents the current, cumulative "extra" days of the 129 patients included in this report

## BARRIERS TO DISCHARGE BY MEDIAN EXTRA DAYS IN THE HOSPITAL\*

BARRIER CATEGORY	BARRIER TO DISCHARGE	PATIENTS	MEDIAN EXTRA DAYS
Housing Concerns	Family/caregiver unwilling/unable	36	39
	Home modification needed	3	28
	Homeless	7	7
Insurance	Other Insurance	10	112
	Insurer does not provide post-acute coverage	2	81
	Waiting for Medicaid Determination	49	43
	Lack of Secondary Insurance	1	36
	Inadequate post-acute network	5	24
	Delayed response from insurer	1	6
	Denial of request for authorization from insurer	0	
Need for Specialized Services	High acuity (e.g. one-to-one)	10	133
	Bariatric	3	113
	IV Treatment	2	50
	Dialysis	3	48
	Specialized BH/SUD services	10	34
Other	Lack of guardianship/conservatorship/health care	27	45
	Staffing/capacity constraints at post-acute care facility	39	36
	Lack of access to necessary community services	16	27
	Transportation Unavailable	0	

\*Patients can experience more than one barrier.